

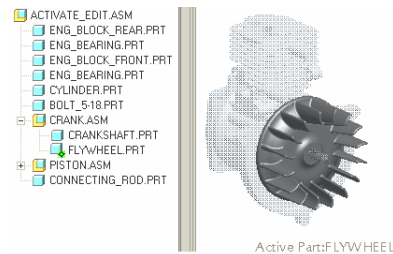
Pro/ENGINEER Wildfire 4.0 Update from Pro/ENGINEER Wildfire 3.0

Overview

Course Code **TRN-2171-T**

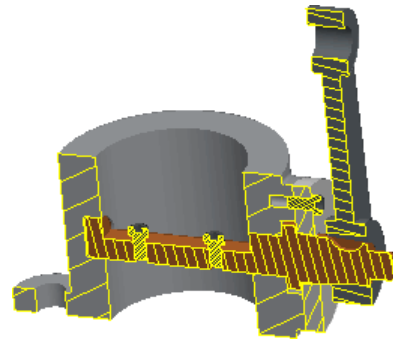
Course Length **1 Day**

In this course you will learn how to utilize many of the enhancements to core functionality in Pro/ENGINEER Wildfire 4.0. You will become familiar with enhancements to Part mode, including Draft, Swept Blends, UDFs and general interface enhancements. You will become familiar with the enhancements to Sketcher, such as referencing intent objects and replacing sketcher references. You will learn about new and enhanced Assembly capabilities such as the Global Reference Manager. You will review Drawing and Sheetmetal enhancements as well.



Course Objectives

- Describe and utilize Part enhancements.
- Describe and utilize Sketcher enhancements.
- Describe and utilize Assembly enhancements.
- Describe and utilize Drawing enhancements.
- Describe and utilize Sheetmetal enhancements.



Prerequisites

- Completion of T1827-350 Pro/ENGINEER Wildfire 3.0 Update from Pro/ENGINEER Wildfire 2.0 or equivalent experience.

Audience

- This course is intended for people who have already upgraded to Pro/ENGINEER Wildfire 3.0.

Agenda

Day 1

Module	1	Part Enhancements
Module	2	Advanced Part Enhancements
Module	3	Sketcher Enhancements
Module	4	Assembly Enhancements
Module	5	Drawing Enhancements
Module	6	Sheetmetal Enhancements

Course Content

Module 1. Part Enhancements

- i. Navigator and Browser Enhancements
- ii. File Open Dialog Enhancements
- iii. Parameters Dialog Box Enhancements
- iv. One-By-One Selection
- v. Exact Relation
- vi. Asynchronous Curve Creation
- vii. Hole Profile Options
- viii. Tapered Holes and Pipe Threads
- ix. Cosmetic Thread Enhancements
- x. Shell Enhancements
- xi. Group Enhancements
- xii. Part Parent/Child Information Enhancements

Knowledge Check Questions

Module 2. Advanced Part Enhancements

- i. Draft Enhancements
- ii. Extend Enhancements
- iii. Swept Blend Enhancements
- iv. Intent Datum Features Enhancements
- v. UDF Enhancements
- vi. Intent-Based UDFs
- vii. Merge Enhancements
- viii. Remove Surface Feature
- ix. Auto Round

Knowledge Check Questions

Module 3. Sketcher Enhancements

- i. Default Diameter Dimensions
- ii. Auto-Locking Dimensions
- iii. Sketcher Line Style and Color
- iv. Undo/Redo Reorient View
- v. Sketcher Intent Object Referencing
- vi. Replacing Sketcher References
- vii. Sketcher Diagnostic Tools

Knowledge Check Questions

Module 4. Assembly Enhancements

- i. Zone Enhancements
 - ii. Axis Alignment Enhancements
 - iii. Clipped State Enhancements
-

- iv. Frozen Component Enhancements
- v. Assembly Family Table Enhancements
- vi. Simplified Representation Enhancements
- vii. Global Reference Viewer
- viii. Replace Component Enhancements
- ix. Component Transparency Enhancements
- x. Active Component Enhancements

Knowledge Check Questions

Module 5. Drawing Enhancements

- i. Cross Section Enhancements
- ii. Full Unfold Cross Section Enhancements
- iii. GTOL Enhancements
- iv. Dimension and Tolerancing Enhancements
- v. Modify Model Edges Enhancement
- vi. View Name Placement Enhancements
- vii. Offset Notes Improvements
- viii. Tapered Thread Enhancement
- ix. Converting Draft Entities Improvement
- x. Draft Datum Improvements
- xi. Draft Entities Improvements
- xii. Bill Of Material Enhancements

Knowledge Check Questions

Module 6. Sheetmetal Enhancements

- i. Annotation Planes for Bend Notes
- ii. Sheetmetal Default Accuracy and Thickness Parameter
- iii. User-Defined Flat Wall Sections
- iv. User-Defined Flange Wall Sections
- v. Add to Part Edge Option

Knowledge Check Questions
